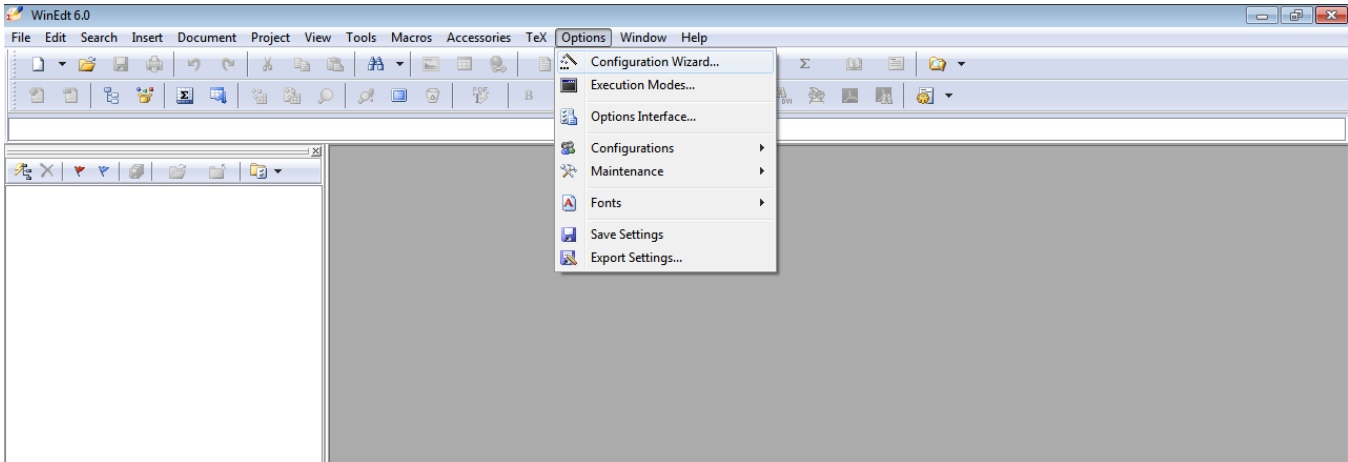
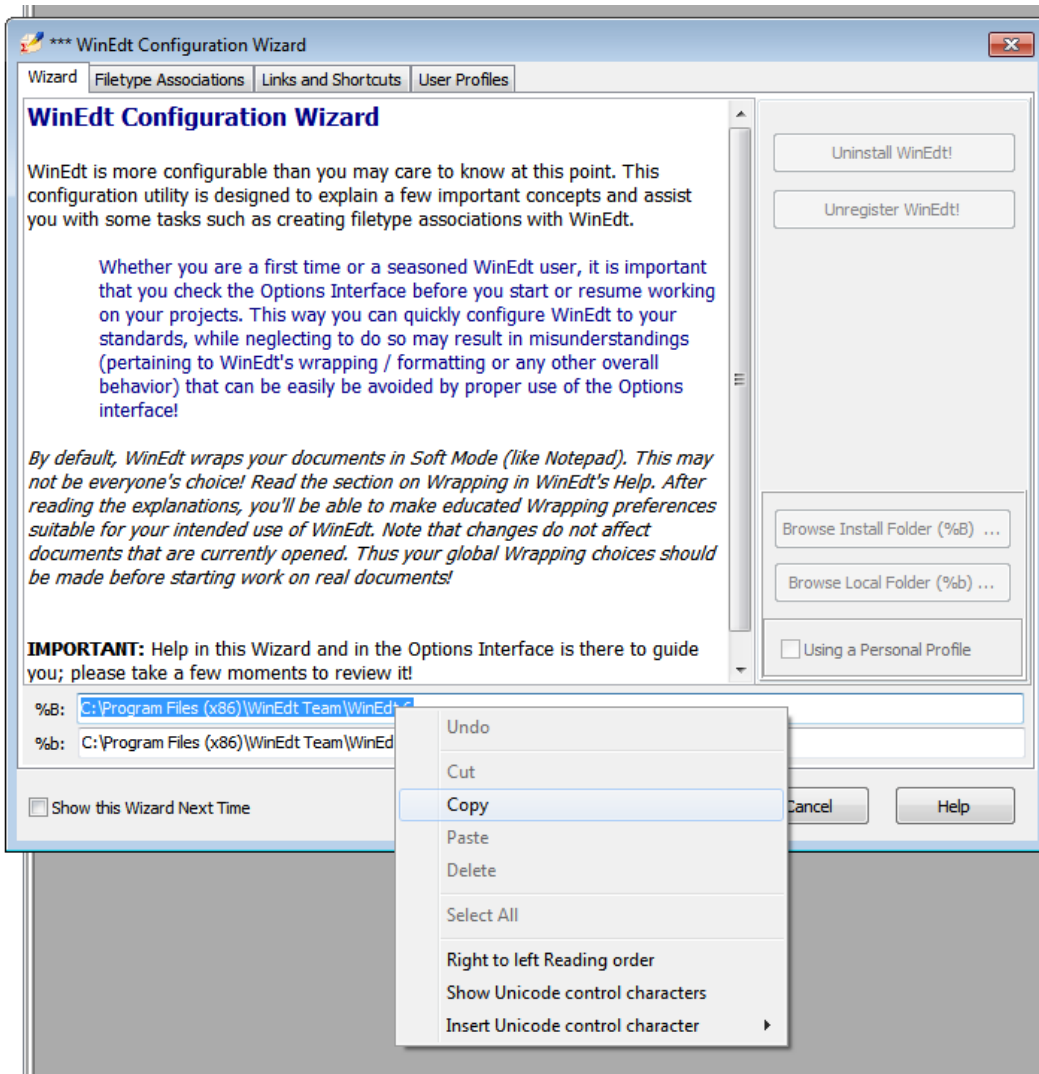


RWINEDT Instructions

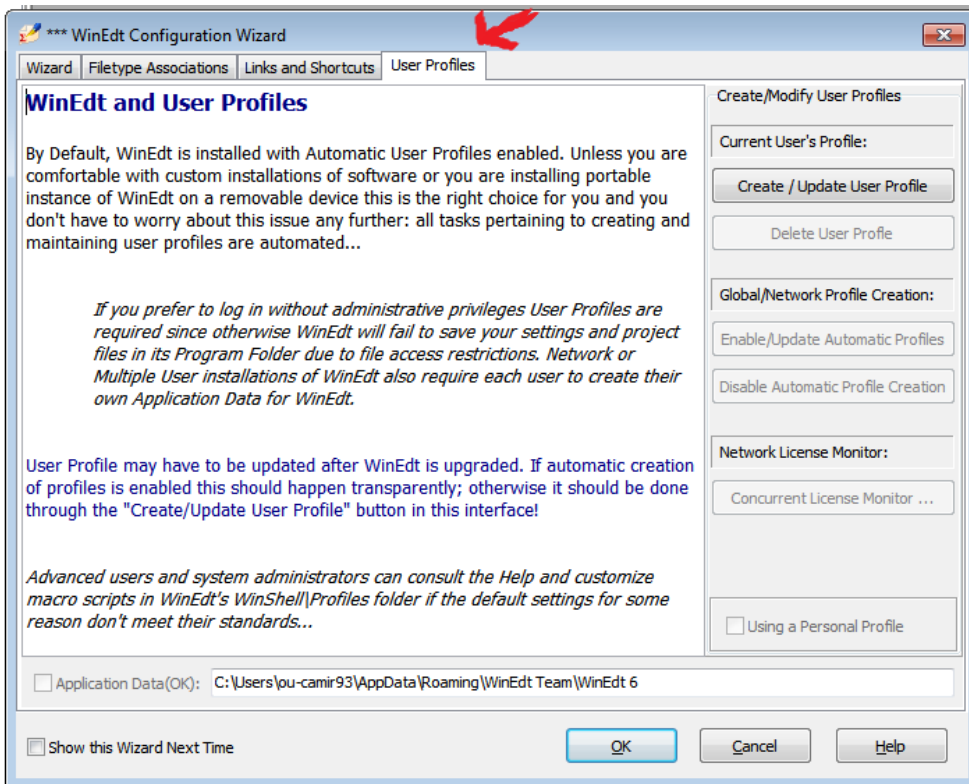
1. Open Winedt first and enter the Configuration Wizard which is found under the Options menu



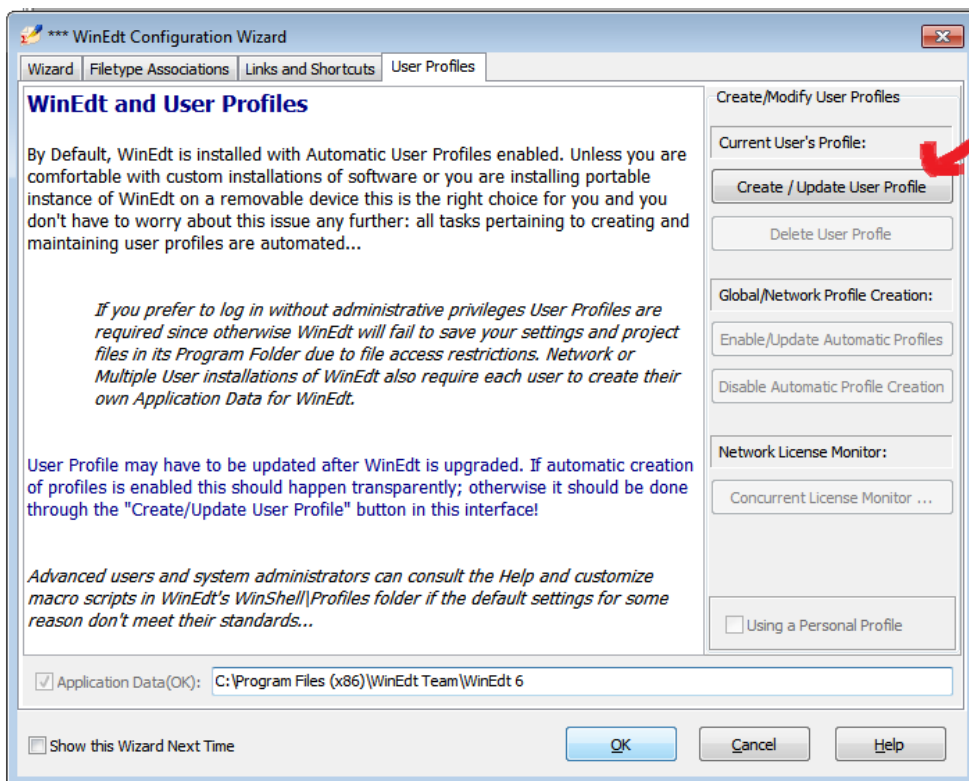
2. In the wizard, highlight the first path as shown below, right click and select copy.



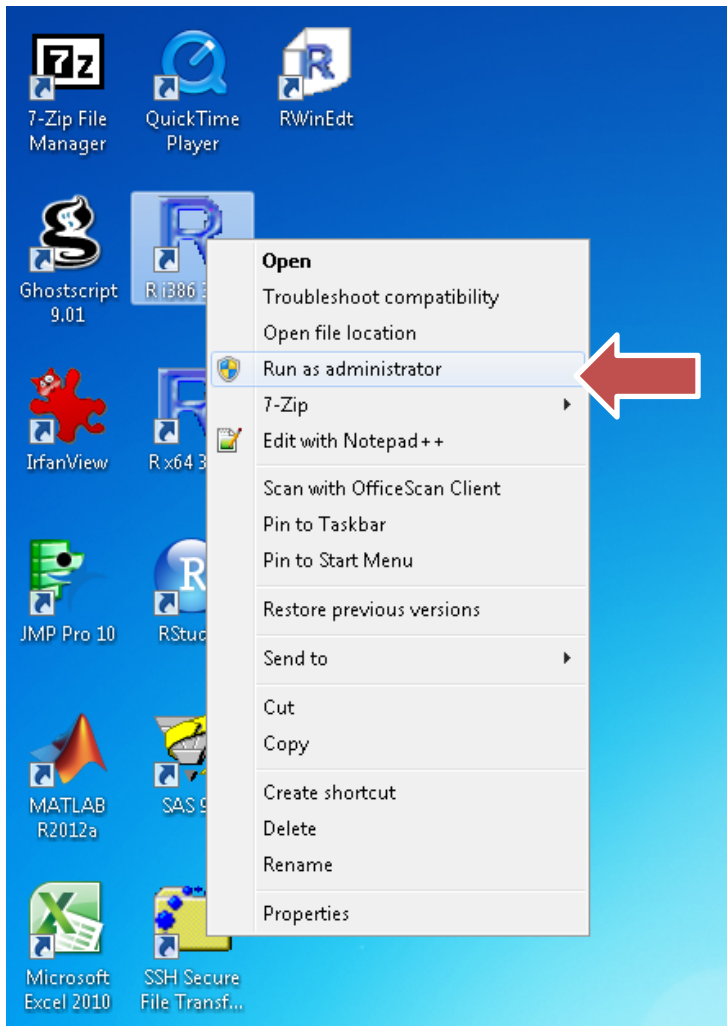
3. Then click 'User Profile' which is the last tab in the configuration wizard.



4. Replace the path shown in the above screenshot with the one you just copied by pasting and select 'Create/Update User Profile' (highlighted by the arrow). Click ok in the pop up window and then click ok to exit the wizard.

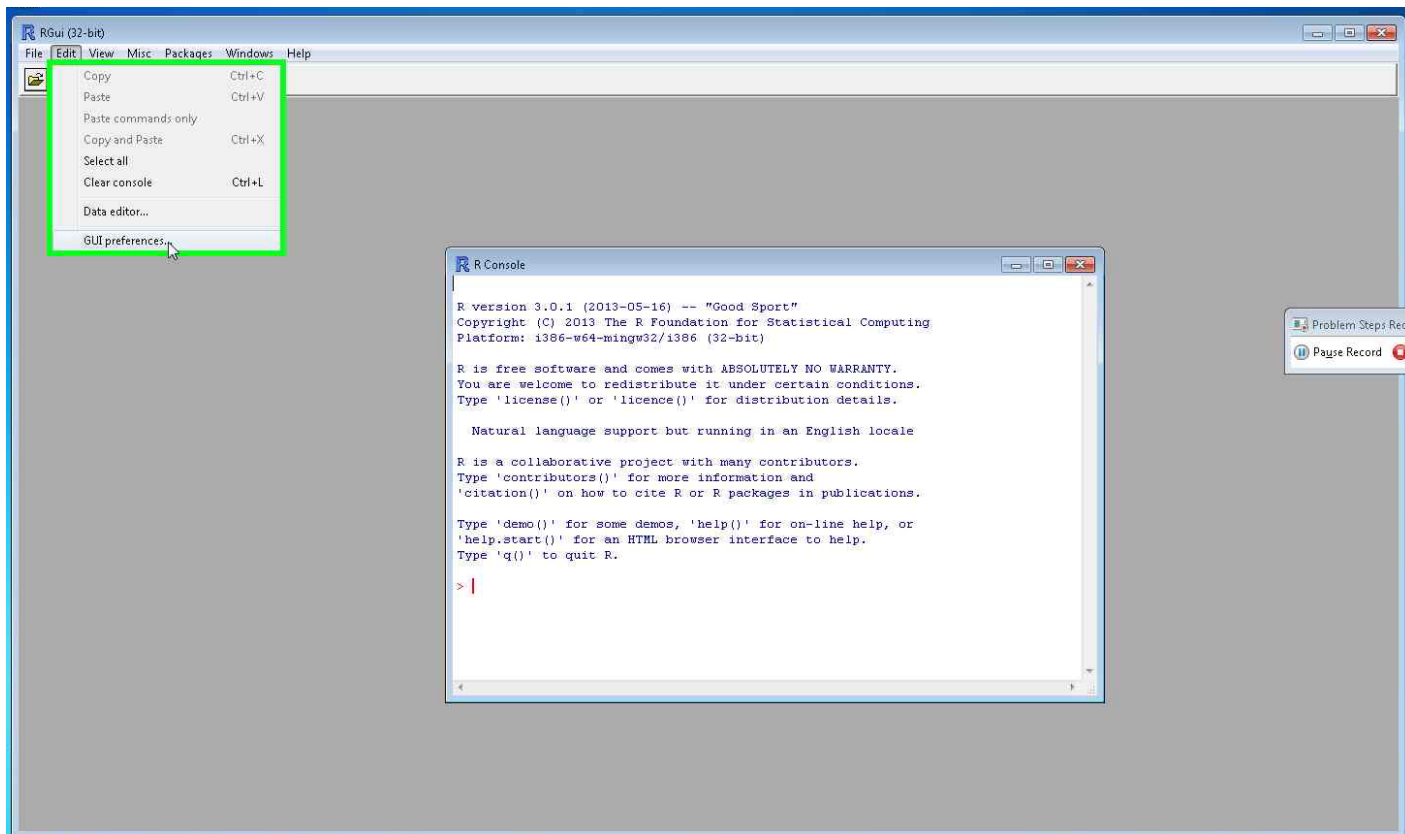


5. If you are on your personal computer, right click and launch R as **'administrator'** as shown below then load RWinEdt. If using a department computer, launch R using the normal 'double-click' and load RWinEdt package.

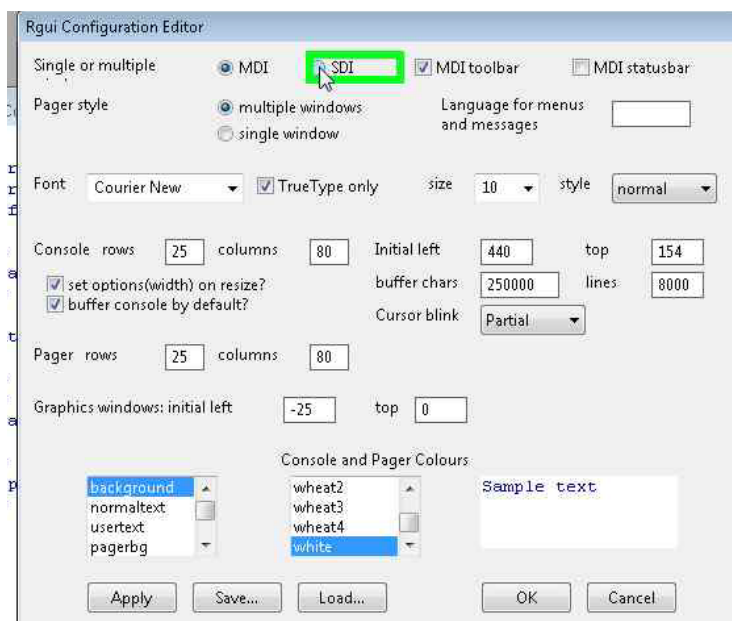


6. For R to interface with WinEdt properly it should be in 'SDI' mode. Do this using the following steps.

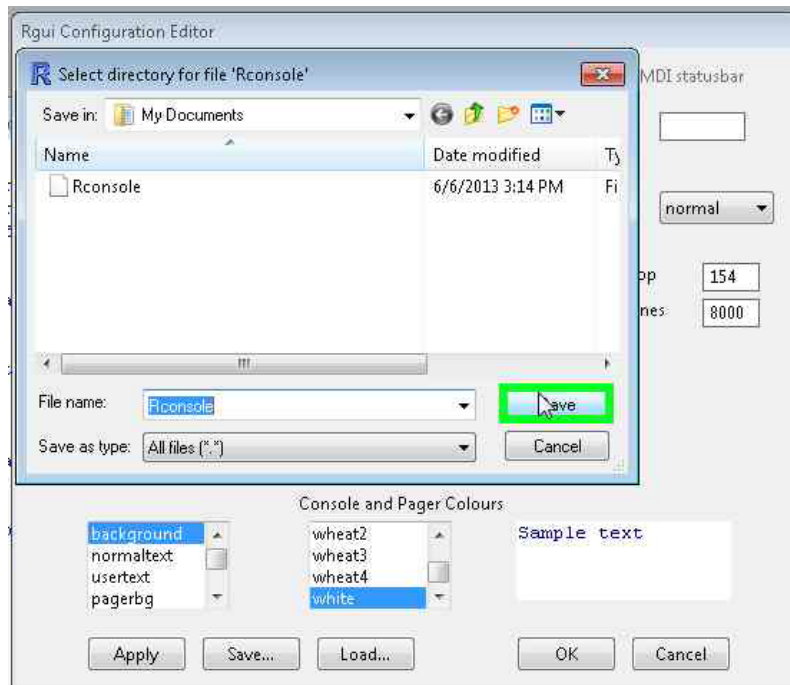
a. Select the Edit menu item and click 'GUI Preferences'.



b. In the panel that pops up, select 'SDI' and then click save.



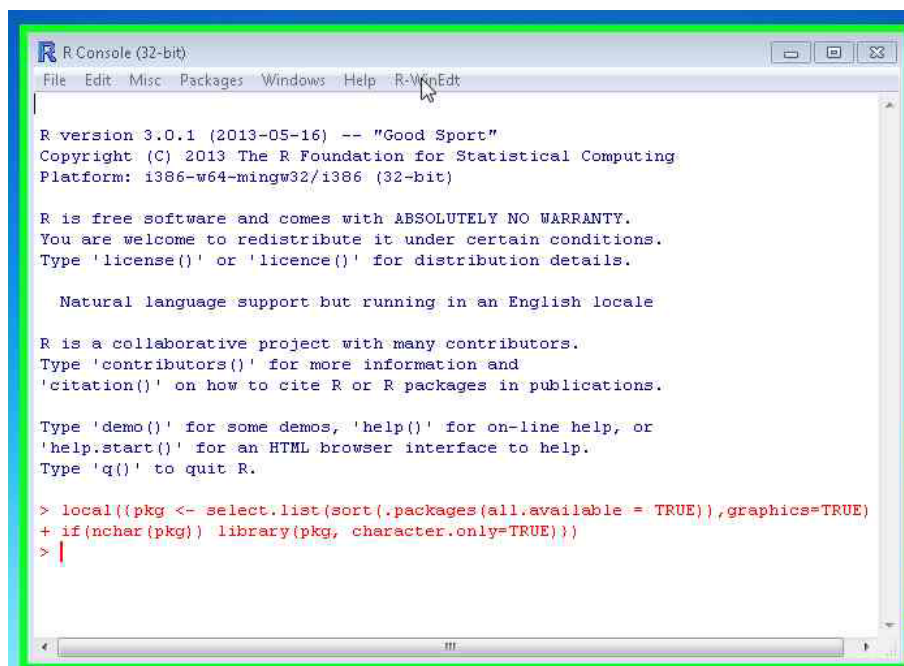
c. Save in the default location and replace any preexisting file of the same name.



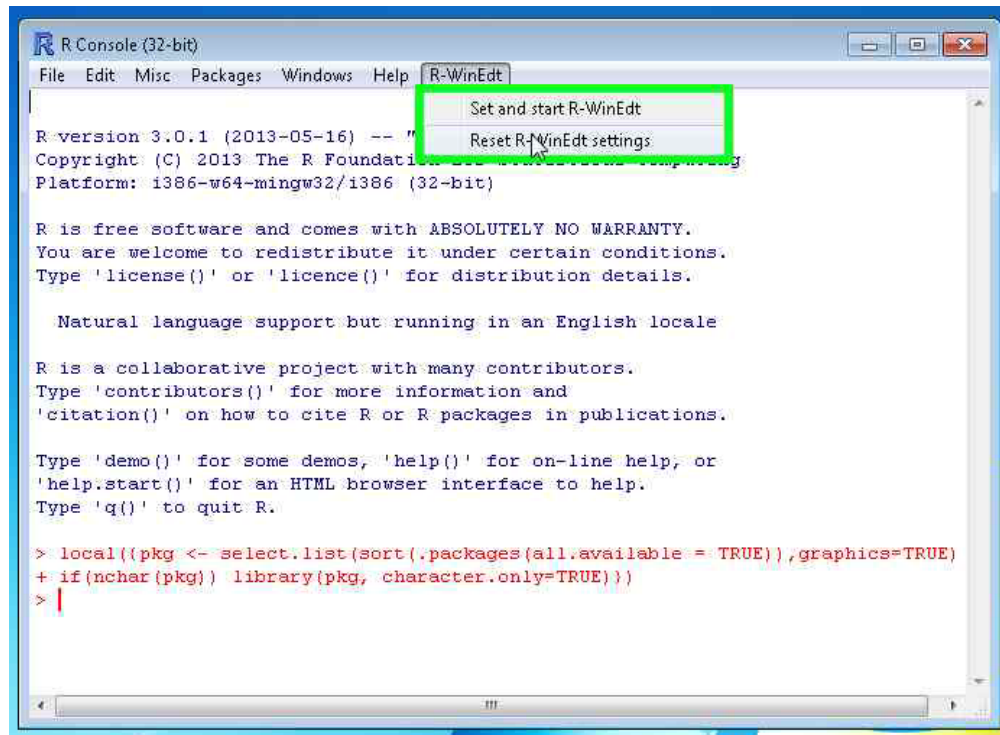
d. Click 'ok' after you have saved the settings and then restart R.

7. **In some cases**, the toolbar that should be shown in WinEdt that allows users to interface with R through WinEdt does not show. **Resetting RWinEdt** should do the trick. This is shown below:

a. Open R and left click on '**R-WinEdt**' in the menu bar.



b. Select **'Reset R-WinEdt settings'** in the menu then click 'ok' on the pop up dialog box.



c. By now everything should be working as expected.